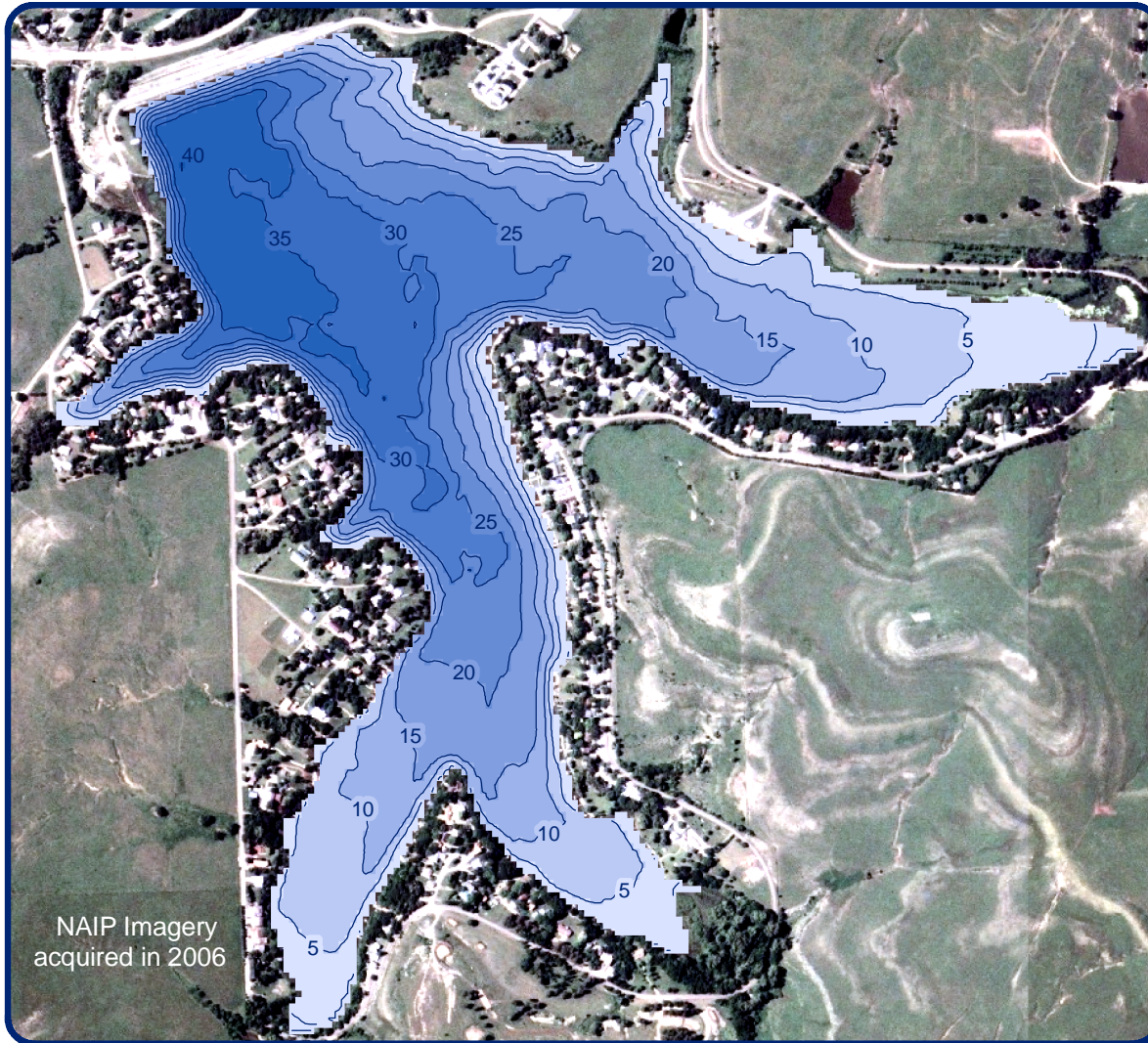
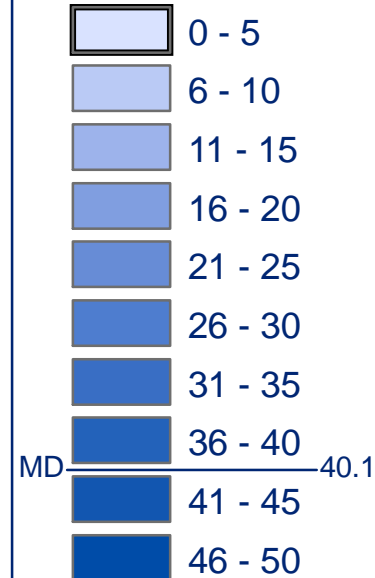


# Wabaunsee Lake

## Water Depth



### Depth (feet)



Maximum Depth (MD) indicates the maximum depth of the lake.

Contour Interval = 1 foot

Map created August 28, 2008



This map was created by the KBS from acoustic echosounder data. KBS uses Biosonics, Inc. (Seattle, WA) DT-X digital acoustic echosounder linked to a global positioning system (GPS) and ArcGIS software. During the lake survey, a series of lines, or transects, are followed across and along the lake. At regular intervals, the system records the water depth and location. The thousands of points of data are then interpolated to a surface using mathematical models in a GIS.

The Kansas Biological Survey (KBS) is a non-regulatory agency of the state of Kansas, and a non-degree granting research and service unit of the University of Kansas (KU). Established in 1911, KBS is a nationally recognized leader in several fields of environmental research.

Date of Survey:  
June 3, 2008



**ASTRA**  
Applied Science and Technology for Reservoir Assessment



This map was produced by the Kansas Biological Survey (KBS) at the University of Kansas, Lawrence, using data believed to be accurate; however, a degree of error is inherent in all maps. The map is distributed "as-is" without warranties of any kind, either expressed or implied, including but not limited to warranties of suitability to a particular purpose or use. The risk or liability resulting from the use of this product is assumed by the user. The KBS shares no liability with product users in any direct, incidental, special, or consequential damages whatsoever, including, but not limited to, loss of revenue or profit, lost or damaged data, or other commercial or economic loss.